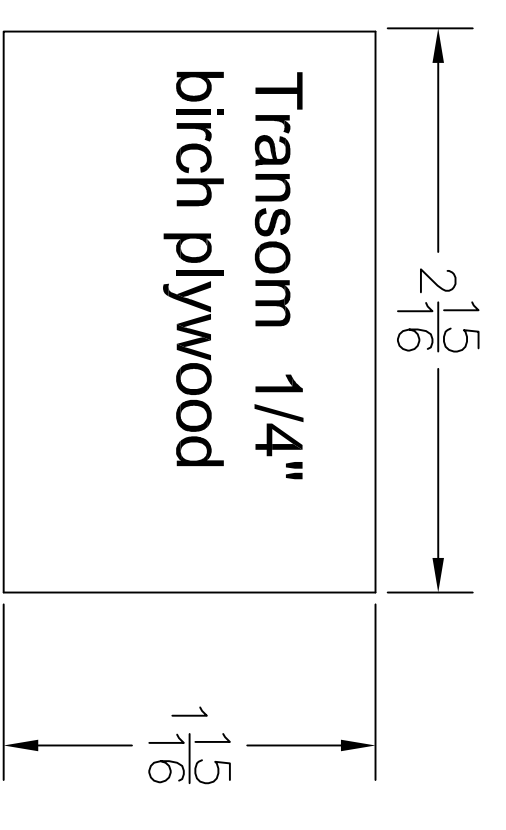
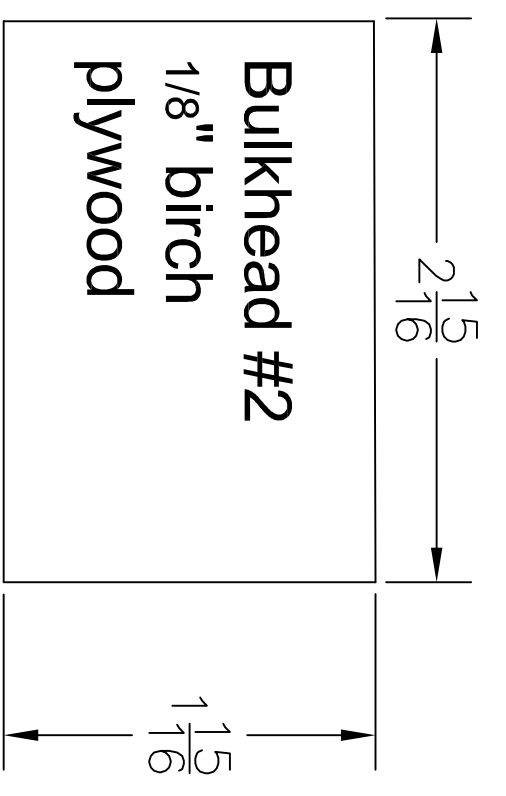
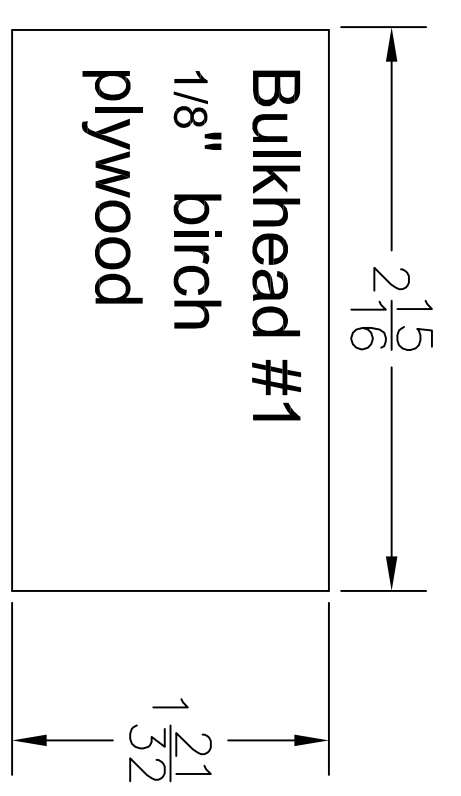
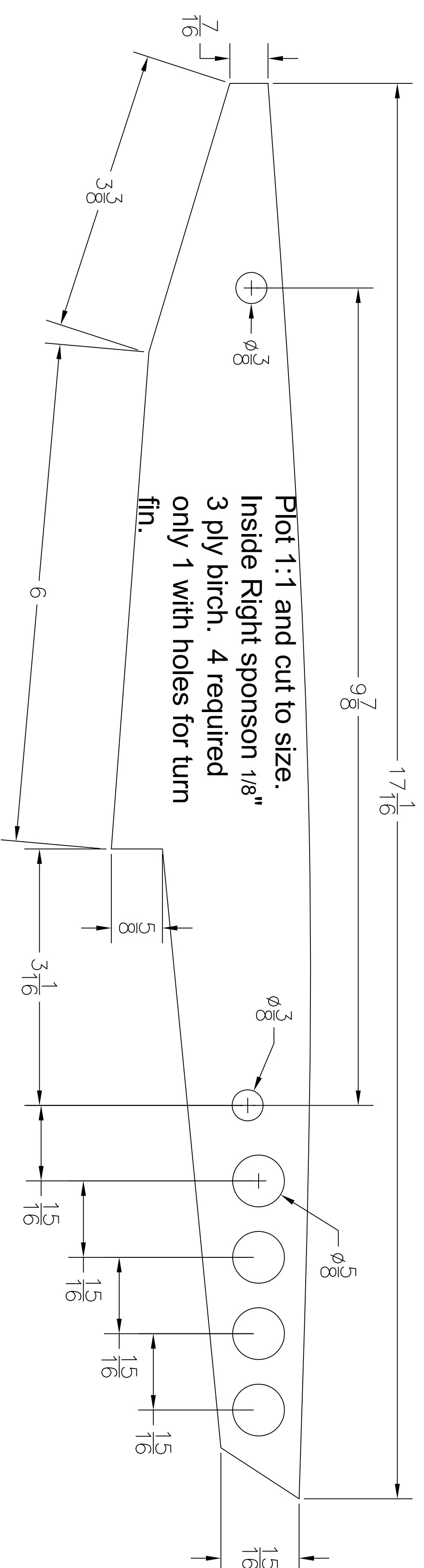
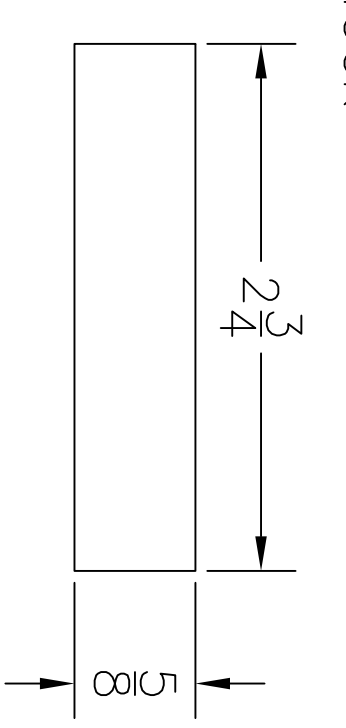


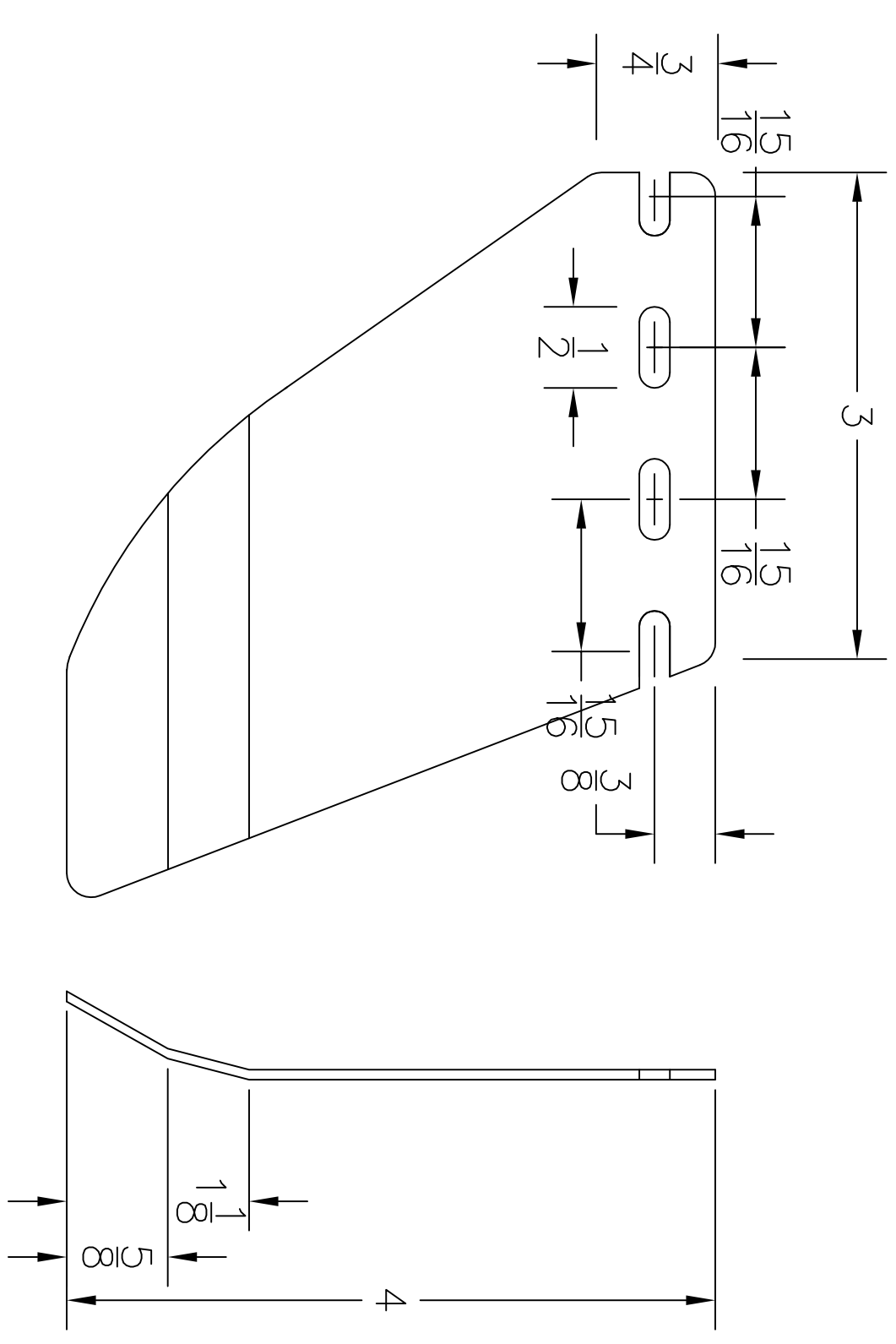
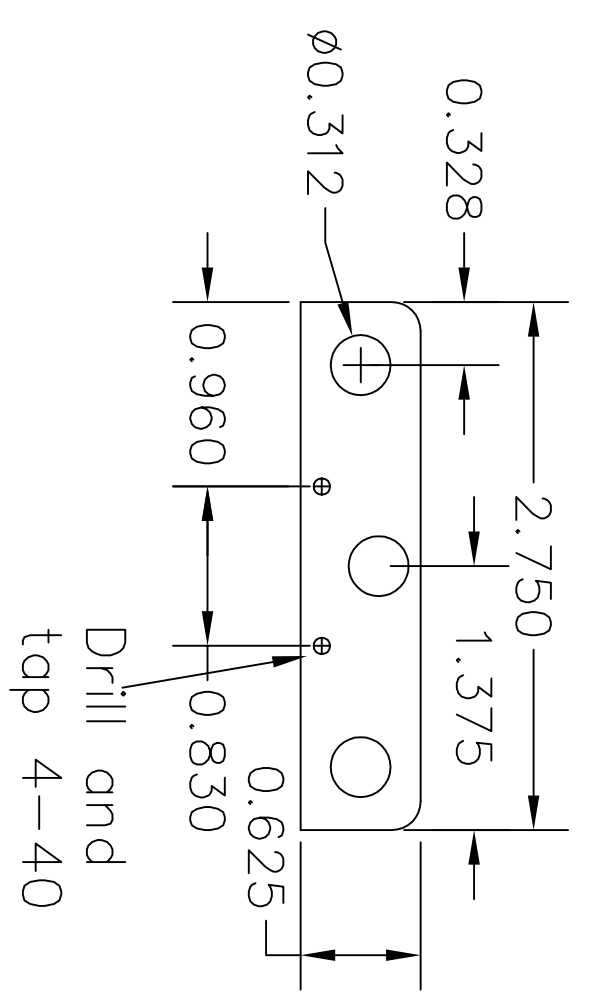
JAE RACING JAE21G2



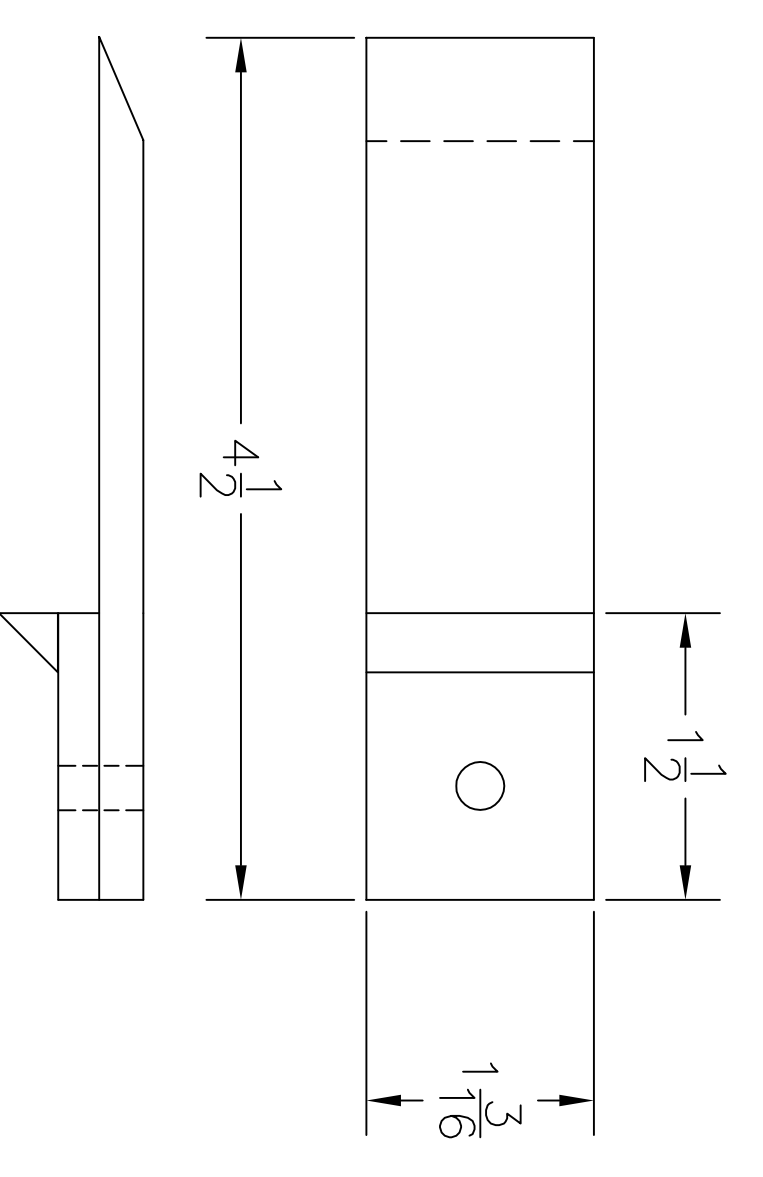
Motor mount block, 2 required. 3/8" X 3/8" hardwood block



Motor mount made of 1/8" aluminum. 2 needed



JAE 21 Turnfin
Bends are approximately 20 degrees each



RUDDER BRACKET IS MADE OF 3/16" PLYWOOD WITH THE LAST 1" LAMINATED DOUBLE. THE LEADING EDGE IS TAPERED TO ELIMINATE DRAG DURING LAUNCH. THIS IS JUST A SUGGESTED RUDDER BRACKET. A STANDARD ANGLE BRACKET BOLTED TO THE TRANSOM WILL WORK FINE.



JAE 21G2 Hydro (Heat Racing) TEMPLATES

Design by Geraghty, Hall, Zaker, Truex
Drawn by David Hall

SIZE	FSCM NO.	DWG NO.	REV
SCALE 1:1			
SHEET 2			